

List of hotels in the center of Chisinau

Note:

1. Exchange rate: 1 EURO \approx 20 MDL, 1 RON \approx 4 MDL
2. Saturday, October 14 is "Hramul Chişinău" (the presence of guests from abroad).

Bristol Central Park Hotel - 1600 MDL (Breakfast)

Nr. [+373 022 902 222](tel:+373022902222)

<https://bristol.md/>

Str. Puskin 32



Dacia Hotel Chişinău

Rooms: Single - 800 MDL (Breakfast), Double -1200 MDL (Breakfast)

str. 31 August 1989 135, Chişinău 2012, Moldova.

[+373 \(62\) 17-77-67](tel:+37362177767)



Vila ACAEM- 1220 MDL Str. Vasile Alexandri 141/1

Nr. [+373 687 23 334](tel:+37368723334)

<https://villa-acaem.hotelschisinau.com/en/>



Luna Hotel -1800 MDL (Breakfast)

str.Petru Movila nr. 4

Nr. [+373 022 233 523](tel:+373022233523)

<https://lunahotel.md>



Hotel Turist - 800 MDL

Str. Grigore Vieru 9

Nr. +373 67 300 448

<http://www.hotel-turist.md/ro/index.html>



Hotel Zarea -500 MDL

Str.Anton Pan nr.4

Nr. +373 22 220 658

<http://hotelzarea.com/ro>

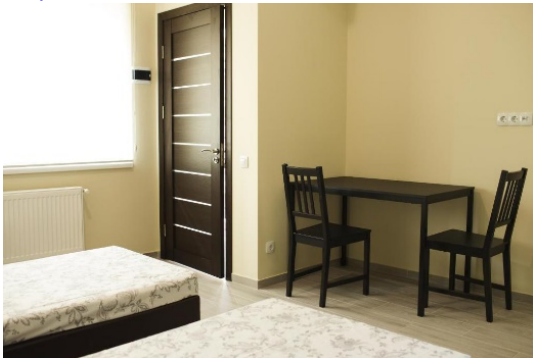


Hotel 77/5 -1000 MDL

Str. Bucuresti 77/5

Nr. +373 78 543 221

<https://77-5-chisinau.hotelmix.ro/>



Edem Hotel -1100 MDL

Str. Odesa nr.34/1

Nr. +373 22 276 463

<https://edem-hotel-chisinau.hotelmix.ro/>



Bed & Breakfast Olsi -1400 MDL, (Breakfast)

Str. Bernardazzi 26/3

+373 79 797 995

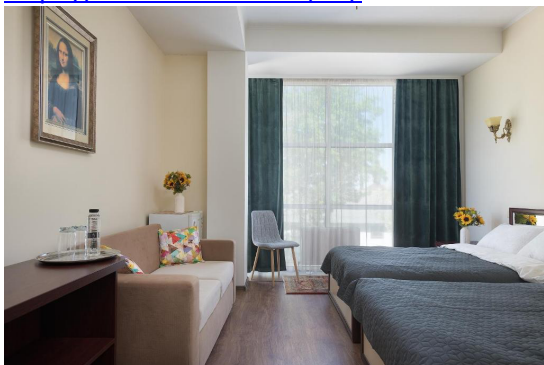
<http://business-and-spa-olsi.hotel-chisinau.com/en/>



Art Hotel -1500 MDL Str. Alexei Mateevici 3 (Breakfast)

Nr. +373 79 888 502

<https://www.arthotel.md/en/>

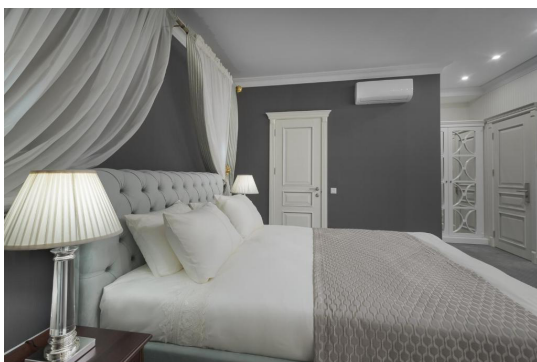


London Butique Hotel -1250 MDL

Str. Ismail 17

Nr. +373 60 118 861

<https://londonhotel.md/>



Wine Hotel Chisinau -1030 MDL

Stradela 1, Aerodromului 4 (Breakfast)
Nr. +373 788 80 350

<https://www.wine-hotel-chisinau.com/>



Park Hotel -1625 MDL

Str. Eugen Doga 2 A
Nr. +373 788 80 350

<http://citypark.md/contacts>

